

CDM Guidance for Community Partners

13 February 2024



Contents

- Introduction
- The Assurance team and our role
- Overview of RIBA Stages
- What are the CDM Regulations
- CDM Roles
- CDM Duties
- How does this relate to PfE
- Competency Assessment
- Summary

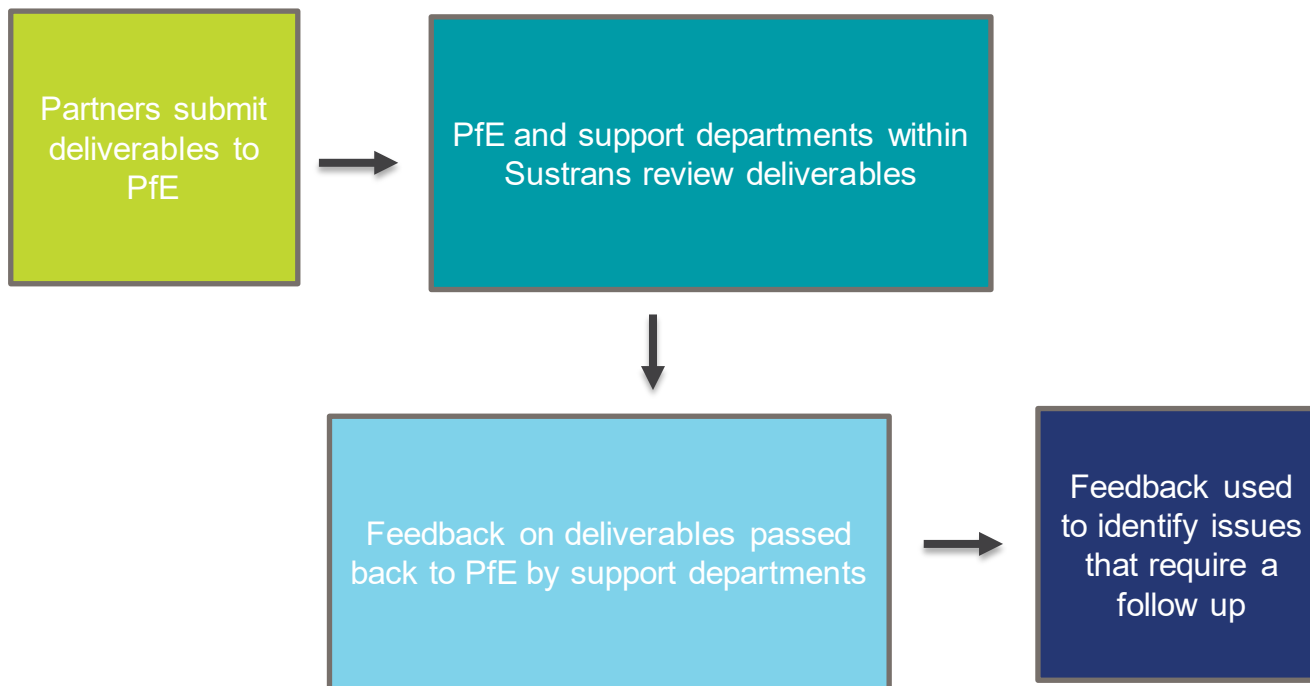
Who we are and our role in Sustrans



Assurance Team

- A sub team of Places for Everyone our role is to review applications and highlight any areas of significant risk including:
 - Budget
 - Programme
 - Buildability
 - Construction Design and Management (CDM)

Who we are and our role in Sustrans



Overview of RIBA Stages

- Based on Royal Institute of British Architects, RIBA, Stages
 - Established to provide a plan of work to provide a structured approach to projects.
-
- Stage 0 – Strategic Definition ('The Brief') 0-2 Panel
 - Stage 1 – Preparation & Brief (Feasibility Design) S1 Principal Designer appointed
 - Stage 2 – Concept Design
-
- Stage 3 – Developed Design (Spatial Coordination) S3 Principal Designer (re)appointed 3-4 Panel
 - Stage 4 – Technical Design
-
- Stage 5 – Construction S5 Principal Contractor appointed 5-7 Panel
 - Stage 6 – Handover
 - Stage 7 – In use

Overview of RIBA Stages

– End of Stage 1 Feasibility

- Evidence of local support for the scheme
- Landowner mapping and constraints plans
- Route options provided in a feasibility study
- Project risk register started

– End of Stage 2 Concept

- A preferred route decided on with a Stage 1 Road Safety Audit
- Outline drawings provided
- Maintenance plan drafted
- Designers risk register started

What is CDM?

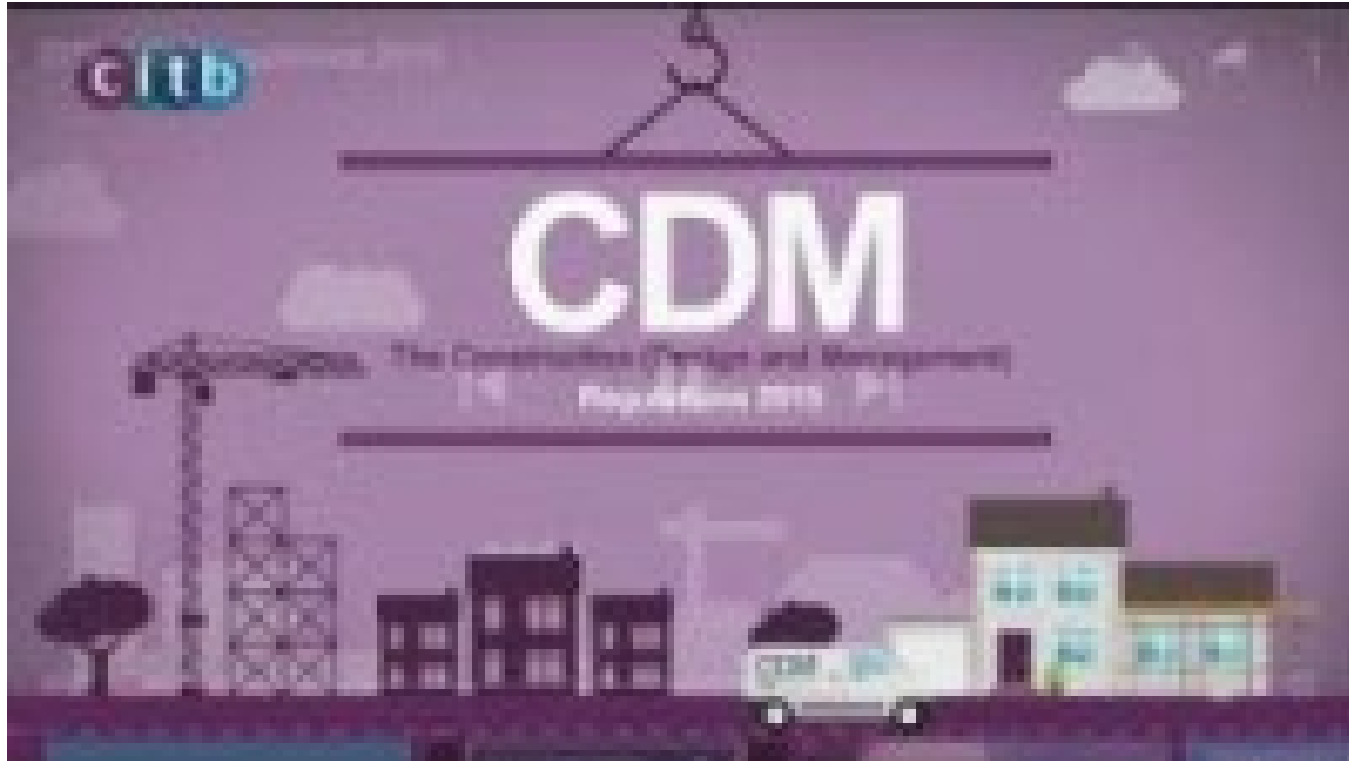
Regulations, Roles and Duties



Construction Design and Management (2015) Regulations

- Part of the remit of the Health and Safety Executive (HSE)
- The CDM Regulations were first introduced in 1994, revised in 2007 and further revised in 2015
- Builds upon H+S at Work Act 1974
- Puts responsibilities on all parties who influence the design of the project in terms of its construction to try and ensure the safety of those involved with delivery, use, and maintenance
- Changes included the removal of the CDM Coordinator role, with their duties falling onto the Principal Designer, the inclusion of the domestic client and the refining of Client duties
- CDM is a legal requirement and ultimately imprisonment can result from non-compliance
- Principles of prevention to be applied on all projects
 - Avoid, Accept, Reduce or Control, Transfer

CDM Regulations



CDM Roles



The three main CDM roles are CDM client, designer and contractor

For projects involving more than one designer, a principal designer (PD) needs defined, and similarly for contractors if there is more than one a principal contractor (PC) needs defined.



The role that you or your organisation will usually take on is that of the CDM client



Many clients are not experts in construction work

As a CDM client, although you are not expected to actively manage or supervise the work yourself, you have a big influence over the way the work is carried out and how much money, time and resource is available



The decisions you make can have large impacts on the health, safety and welfare of workers and others affected by the work



A Client advisor is an optional avenue however the CDM duties for the PD include ensuring that the Client are aware of their duties

CDM Duties in Stages 0-2



Appointing a Principal Designer



Starting to think about buildability



Setting up of risk registers and constraints plans

Utilities

Historic land use

How the site might be accessed

CDM Duties in Stages 0-2 cont.



Making suitable considerations to ensure that construction work could be carried out safely



Note that surveys are not considered under CDM regulations

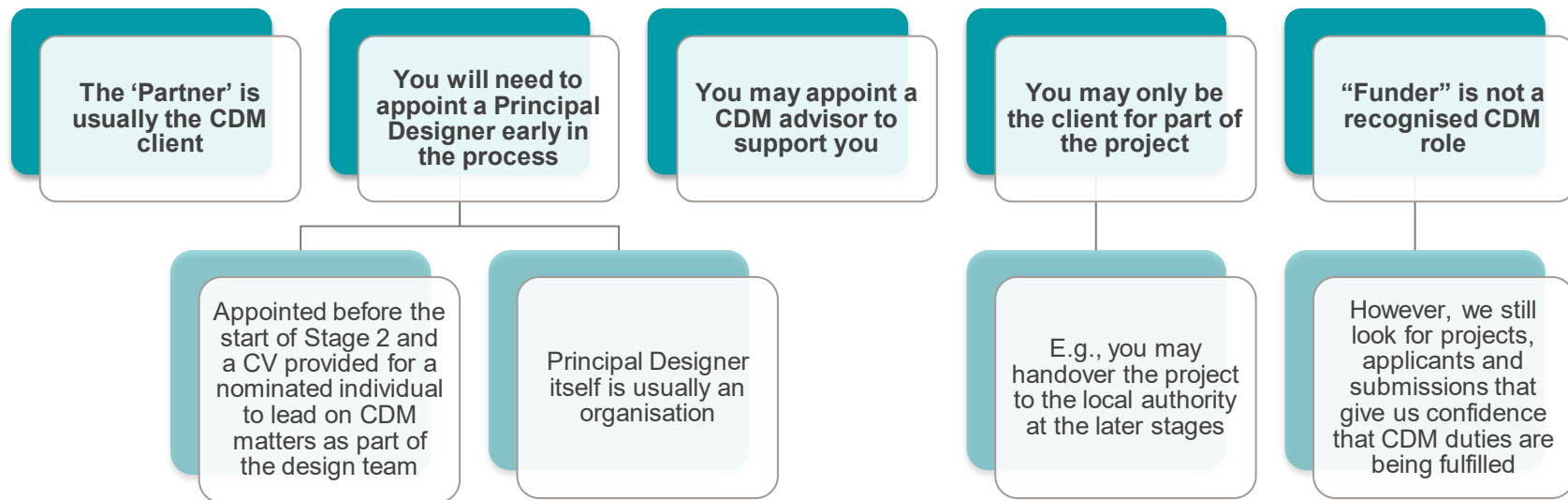
However, anything intrusive, is – at this stage most likely impact will be on ground / site investigations. This doesn't mean you don't need to consider H&S for surveys



Site investigations are probably the most important area of CDM at these early stages

Can the work be undertaken safely, and is there enough information to ensure CDM duties are being fulfilled?

How does this relate to PfE?



Competency Assessment

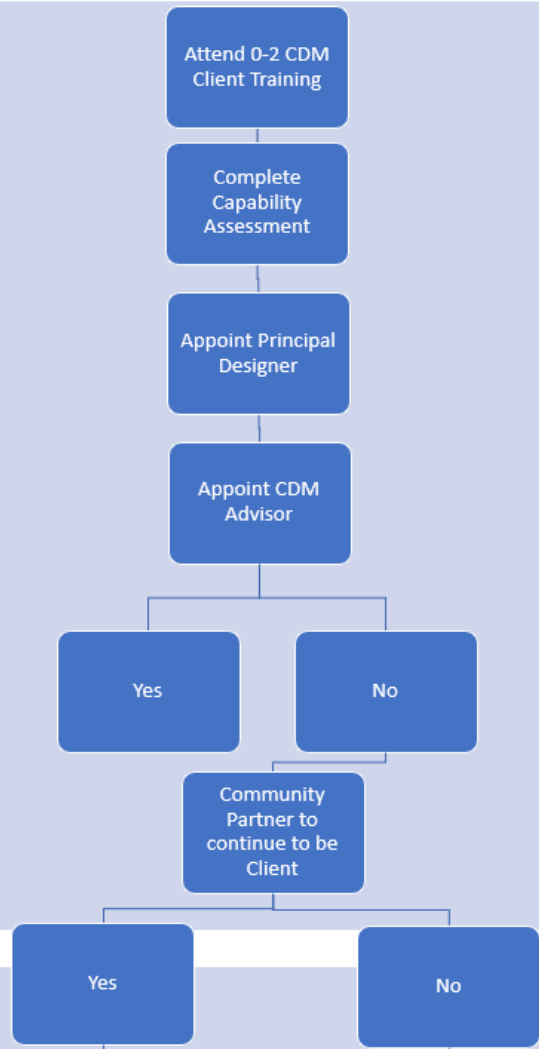
How well do you understand the regulations, roles and duties?



Competency Assessment

- A short and voluntary questionnaire will be issued after this training to help establish how confident an applicant feels with regards to CDM regulations
- It will allow the applicant to self-assess their knowledge gaps and help them to appoint a Principal Designer who is suitably experienced to assist them
- Importance of appointing a competent Principal Designer
 - Part of this process is providing a CV of the person who is going to lead on CDM requirements from the Principal Designer
- We may recommend that a Client advisor is appointed by the project team to supplement the design team
- Client advisor costs can be claimed as a design cost at 100%
- We want to avoid the instance of an inexperienced Client working with an inexperienced Principal Designer

Stage 0-2



Any questions?



Sustrans is the charity making it easier for people to walk and cycle.

We connect people and places, create liveable neighbourhoods, transform the school run and deliver a happier, healthier commute.

Join us on our journey.

www.sustrans.org.uk

Registered Charity No. 326550 (England and Wales) SC039263 (Scotland)
VAT Registration No. 416740656.

