

Places for Everyone

Applicant information session

Wednesday 10th August, 3pm-4pm



What will this session cover?

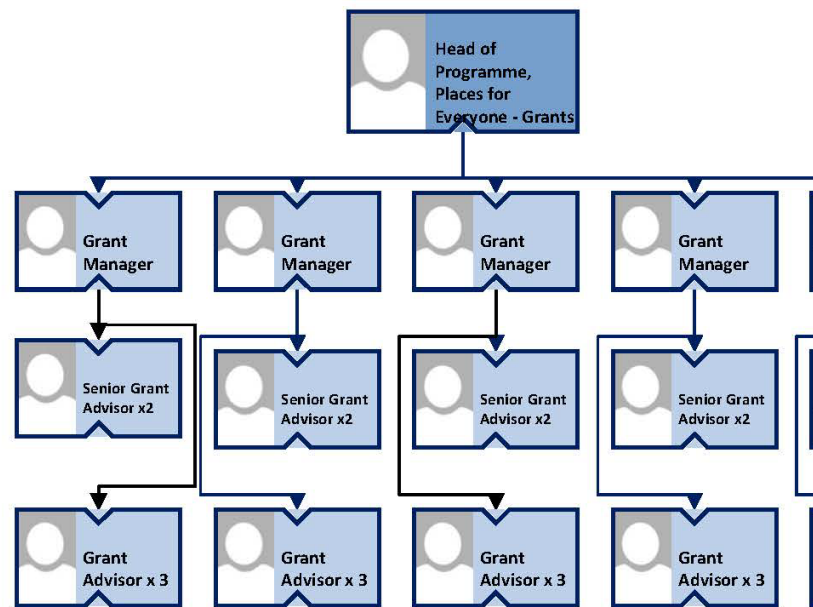
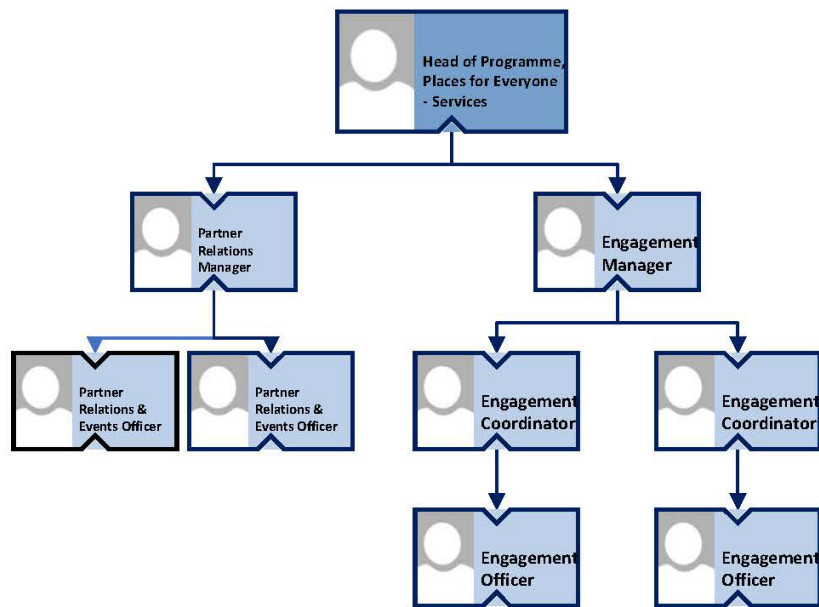
- Introduction to Places for Everyone
- Application Process
- Key documents
 - Application Guide – Concept
- Key Changes
- RIBA stages and groupings
- Assessment and scoring
- Key dates
- Next steps
- Questions

Introduction to Places for Everyone

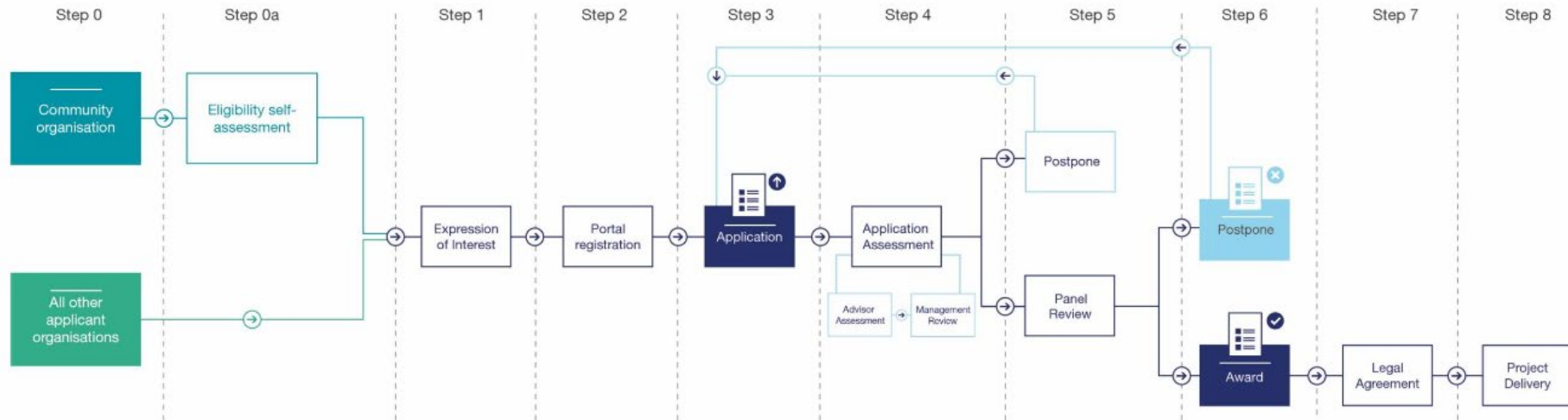
- Places for Everyone is a multi-year infrastructure grant fund and support programme for Scotland.
- Places for Everyone aims to create safer, **more attractive, healthier, and inclusive places** which are **enjoyed equitably** by increasing and diversifying the number of trips made by **walking, wheeling and cycling for everyday journeys**.¹

1: Applicant guidance – Concept, pg. 5

Introduction to Places for Everyone



Application Process



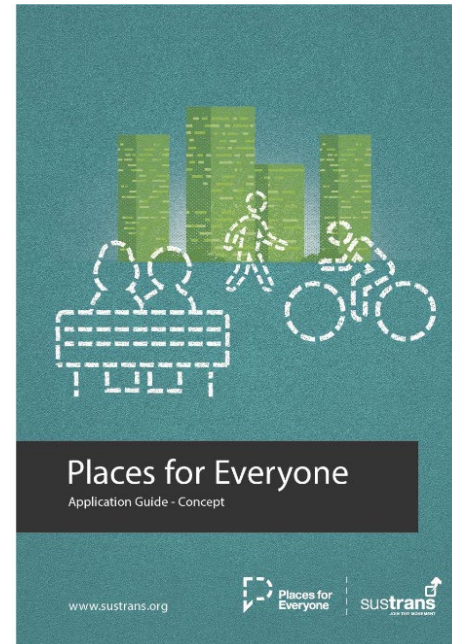
Key documents

Read before applying:

- Application Guide – Concept

For reference:

- Appendix – Applicant Guidance
Concept Deliverables



All partners
Concept (Stages 0-2)

Appendix Concept (Stage 0-2)

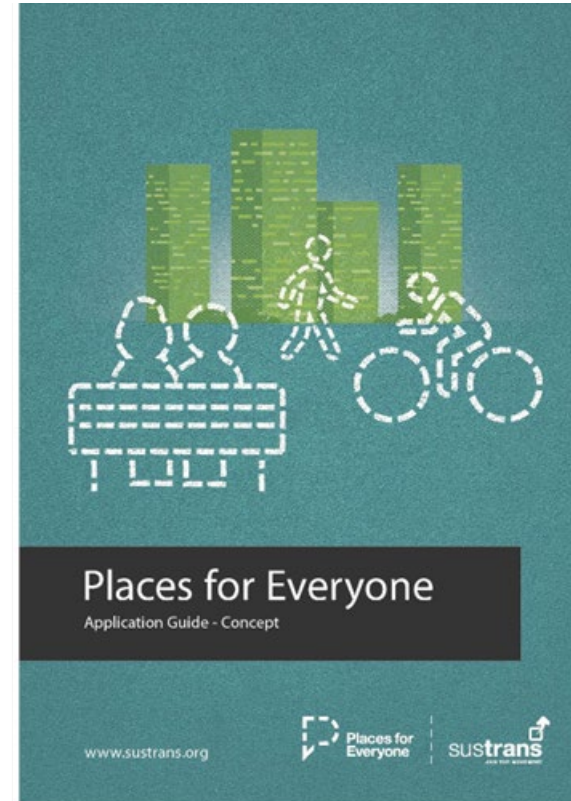
Community organisations



**Look for buttons on the
Showcase website**

What does *Application Guide - Concept* cover?

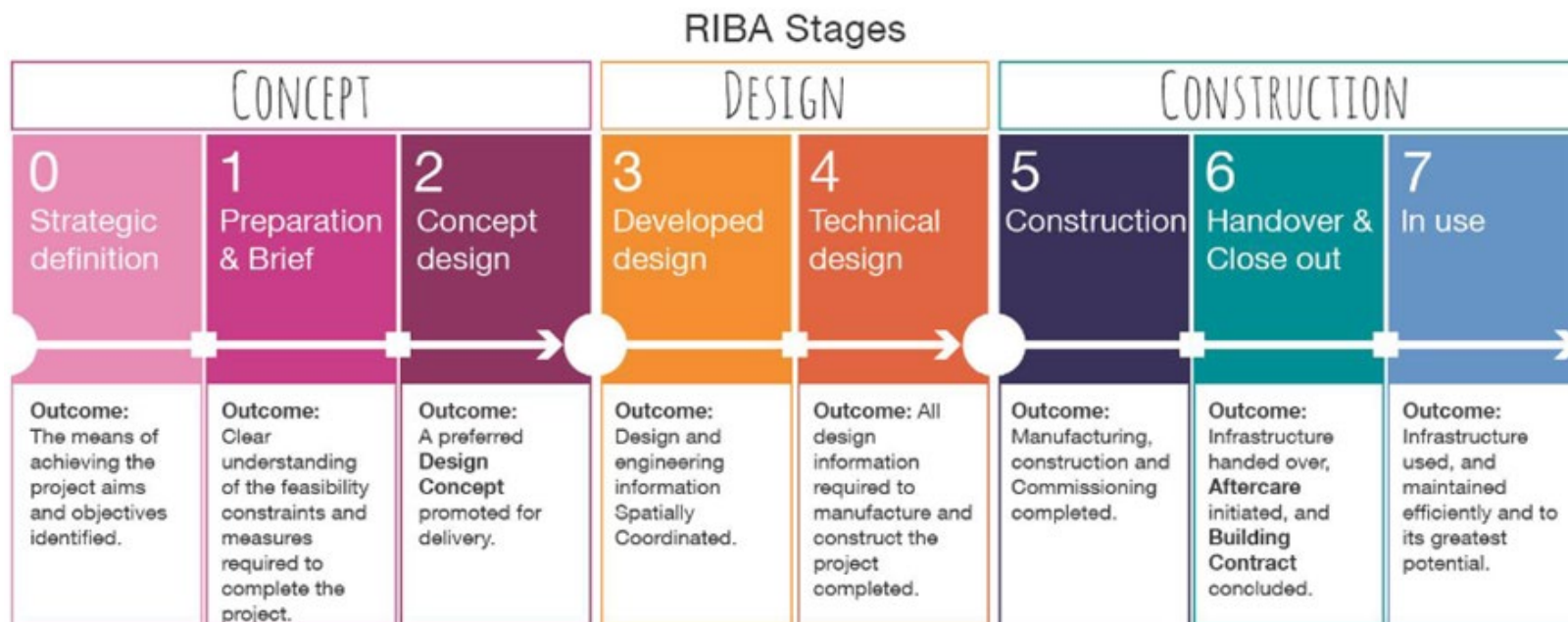
- Design principles and quality standards (pgs. 6-7)
- **RIBA Stages and stage groupings** (pgs. 9-11)
- **How to make your application** (pg. 12-18)
- **Assessment process and scoring** (pgs. 21-22)
- Scoring criteria (pg. 24)



Key Changes

- Funding will continue to be awarded to projects in stage groupings (0-2,3-4,5-7) and across financial years, as is necessary to complete the stages awarded. (Even if you do not intend to commence work on your project until the 2023/24 financial year, please apply now if you are able)
- Funding will no longer be available to support cycle hire schemes or cycle parking as a stand-alone measure (this will not affect projects currently in the programme)
- We now have dedicated teams to support the Grants team, and partners, in Engagement, Behaviour Change, Equality and Design.

RIBA Stages and groupings



Assessment and Scoring

- First an assessment is carried out by a **Grant Advisor** who will review any deliverables submitted to assess progress.
- Scoring will then be undertaken by a **Grant Advisor** and a **Capital Advisor** based on **Impact, Cost, and Deliverability**
- **Managers** collectively review assessment scores and recommendations presented to them by the **Grant Advisor**
- A further recommendation is presented to a **Panel** of Senior Sustrans Leaders
- **Funding decisions** will be communicated as **awarded with conditions** or as **not awarded with feedback**.



How to make a good application

- **Use SMART objectives** – Specific, Measurable, Achievable, Realistic, Time-bound
- Demonstrate a willingness to aim for **high quality**
 - Refer to: Design principles and Quality standards (*Applicant guidance – Concept, pgs. 6-7*)
- Show **how** you intend to deliver your proposal, **including resources, programme and budget**
- Be **realistic and transparent** about **deliverability** - possible hurdles or complexities unique to your project
- Be **specific** about the **impact** of your project and how it links to local strategies

Key dates

Panel Type	Applications Accepted	Applications Open	Application Deadline	Panel Date
Stage 0-2 Concept	New and existing projects	25 July 2022	23 August 2022	31 October 2022
Stage 3-4 Design	New and existing projects	19 September 2022	7 October 2022	19 December 2022
Stage 5-7 Construction	New and existing projects	31 October 2022	29 November 2022	6 February 2023
Stage 0-2 Concept	New and existing projects	28 November 2022	10 January 2023	6 March 2023

What to expect during a project

- You are supported by an assigned **Grant Advisor** - their role is to **monitor, steer, and advise** on the aims of Places for Everyone
- Places for Everyone funding can cover the costs of in-house resource and/or suitable consultant support
- We will review your deliverables throughout each stage and feedback where required. We will also provide support and advice throughout this process and bring in specialists where appropriate
- Please remember our Grant Advisors and support teams are looking after multiple projects so please allow sufficient time for us to review your files/plans before signing off.
- Grant claims must be made at the end of each financial year and at the end of each project stage

Sustrans is the charity making it easier for people to walk and cycle.

We connect people and places, create liveable neighbourhoods, transform the school run and deliver a happier, healthier commute.

Join us on our journey.

www.sustrans.org.uk

Registered Charity No. 326550 (England and Wales) SC039263 (Scotland)
VAT Registration No. 416740656.

